

Exclusive Charter



Ruth's Adventures presents

Switzerland & Christmas Markets of the Rhine

featuring Lucerne, Strasbourg & 6 Nights aboard the Amadeus Cara

9 Days December 3, 2025

RUTH'S ADVENTURES
ON THE GO



**BOOKING
DISCOUNT!**

Save \$200 Per Person
\$400 Per Couple*

*See Reservation Info for
Booking Discount details



9 Days **December 3-11, 2025**

Switzerland & Christmas Markets of the Rhine

Day 1 Depart US - Overnight Flight to Europe

Day 2 Arrive Zurich - Lucerne

Arrive Zurich - Meet your PWD Tour Director
 Transfer to **Lucerne** & Check in for your overnight stay
 Welcome Desk at the hotel Overnight - Lucerne

Day 3 Lucerne - Strasbourg - Board the Amadeus Cara

Morning - **Lucerne Walking Tour & Christmas Market**
 Travel to Strasbourg, France via motorcoach
 Board the **MS Cara** for **6 Night Rhine River Cruise**
Welcome Dinner Onboard

✕ Meals - B & D Overnight - Amadeus Cara

Day 4 Strasbourg

Morning - **Strasbourg City Tour & Christmas Market**
 Afternoon - Leisure time in Strasbourg or *Alsace & Obernai Optional*
 Ship docked into late evening in Kehl/Strasbourg

✕ Meals - B,L,S & D Overnight - Amadeus Cara

Day 5 Speyer - Mannheim

Morning - **Speyer Walking Tour & Christmas Market**
 Cruise to Mannheim for time at Leisure or *Heidelberg Optional Excursion*
 ✕ Meals - B,L,S & D Overnight - Amadeus Cara

Day 6 Rudesheim - Rhine River Gorge - Koblenz

Morning - Arrive **Rudesheim** & walk into town on own to explore
 or *Optional Rudesheim Tram Car with Musical Instrument Museum*
 Midday - Cruise through the **Rhine River Gorge**, a UNESCO Heritage Site
 Afternoon arrival Koblenz - **Koblenz Walking Tour & Christmas Market**

✕ Meals - B,L,S & D Overnight - Amadeus Cara

Day 7 Cochem

Morning Moselle River Cruising
 Afternoon - **Cochem Walking Tour with Reichsburg Castle, Wine Tasting & Christmas Market**

✕ Meals - B,L,S & D Overnight - Amadeus Cara

Day 8 Cologne

Morning arrival **Cologne** - **Cologne Walking Tour & Christmas Market**
 Afternoon at Leisure in Cologne

Gala Farewell Dinner Onboard - Ship docked overnight in Cologne

✕ Meals - B,L,S & D Overnight - Amadeus Cara

Day 9 Cologne - Frankfurt Airport - Flight Home

Morning transfer to the Frankfurt Airport for your flight home

✕ Meal - B

B - Breakfast Hotel/Onboard • S - Snacks Onboard afternoon and/or evening
 L - Lunch Onboard • D - Dinner Onboard with Beer & Hand Selected Wines



Lucerne, Switzerland

Visit and overnight in Lucerne, a traditional Swiss town along the banks of Lake Lucerne with an Alpine backdrop. Enjoy a **Lucerne Walking Tour** of this medieval gem and see some of the city's lovely cobblestone streets, monuments, fountains, public squares, covered bridges, colorful frescoes buildings and the iconic 14th century Chapel Bridge. Enjoy Lucerne's colorful Christmas Market and its wonderful Old Town.

Strasbourg, France

Capital city of the Alsace region in northeastern France, Strasbourg is situated on the Rhine at the German border. Enjoy a **Strasbourg City Tour** to see Orangerie, the town's oldest park, the European Parliament, and the Place de la Republique. Take a walking tour of the lovely "La Petite France" neighborhood and see the Gothic cathedral with its famous astronomical clock. Then stroll Strasbourg's Christmas Market, one of Europe's oldest. Later join the optional trip into the Alsace region to visit fairy-tale Obernai & its quaint Christmas Market.

Speyer, Germany

Arrive in Speyer one of Germany's oldest cities, known for its cathedral, numerous churches and the 13th-century Altpörtel ("Old Gate"). Explore the city during your **Speyer Walking Tour**. Later cruise to Mannheim & maybe take an optional excursion to historic Heidelberg to visit the red-walled castle and get beautiful views of the Neckar Valley.

Rudesheim - Rhine River Gorge - Koblenz, Germany

Arrive in **Rudesheim** and explore on your own the Drosselgasse, a narrow alley lined with wine taverns and restaurants. If you prefer join an optional Rudesheim Tour via Tram Car including a visit to Siegfried's Mechanical Musical Instrument Museum. Later the ship departs to cruise through the **Rhine River Gorge**, a UNESCO Heritage Site and the most stunningly beautiful stretch of the river with hillsides dotted with fairy-tale castles, historic towns and vineyards. Later arrive in Germany's oldest city, Koblenz, a charming Rhineland town situated at the confluence of the Rhine & Moselle Rivers. Enjoy a **Koblenz Walking Tour** & the popular Christmas Market. See the famous Advent Calendar at the baroque Town Hall.

Cochem, Germany

The ship makes a detour along the Moselle River to the little town of Cochem. Enjoy a **Cochem Walking Tour** then visit the **Reichsburg Castle**, experience a **Wine Tasting** & stop at the quaint Christmas Market. The magnificent Reichsburg castle is situated high above the town, dominating the landscape. Down below, the village with its narrow streets, half timbered houses and numerous restaurants is an ideal setting to taste the wines of the region.

Cologne, Germany

Cologne is Germany's 4th largest city and located on both sides of the Rhine. Enjoy a **Cologne Walking Tour** featuring the old part of the city and the fabled 13th century Gothic cathedral. Explore the dock side taverns, cafes, shops and the famous Christmas Market in front of the cathedral.

About European Christmas Markets

Enjoy this magical time of year as Europe's countries hold steadfastly onto Old World holiday tradition and transform into fairy-tale Christmas settings. The sights and sensations of the holiday season are everywhere: locals and guests savor the tastes of chocolate covered Lebkuchen (gingerbread), sizzling grilled sausages and spiced hot "Gluehwein" (mulled wine). People also delight in the festively decorated markets and shopping for ornaments, crafts, candles, nutcrackers, winter hats, roasted nuts and other traditional items.

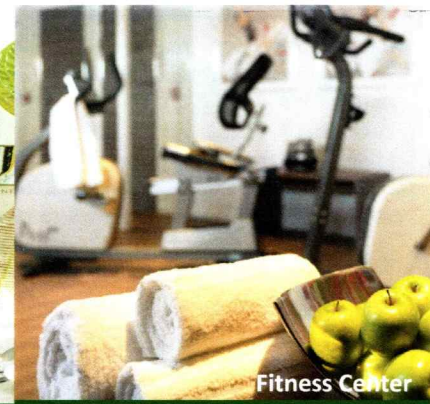




Amadeus Cara



Fine Dining

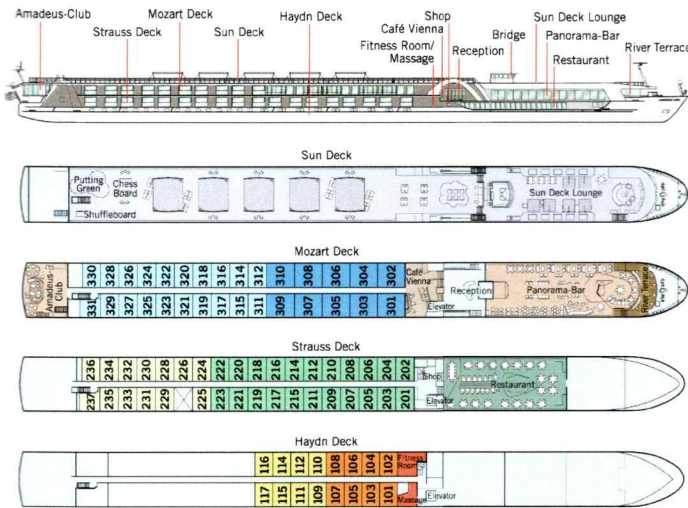


Fitness Center

MS Amadeus Cara

Inclusions

Highlights & Excursions



- Roundtrip Airfare - GRR
- Roundtrip Transfers - GRR
- 1 Night Hotel - Lucerne, Switzerland
- 6 Night Cruise - Outside Cabin
- 18 Meals (7-B, 5-L & 6-D)
- PWD Tour Director(s)
- Ship Staff
- Hand Selected Wines & Beer w/ Dinners
- Welcome & Farewell Dinners
- Wifi Onboard
- Int'l Air Taxes/Fuel/Port Charges
- Baggage Handling at Hotel/Ship
- Hotel/Ship Transfers

- 6 Night Cruise - Amadeus Cara
- 1 Night in Lucerne, Switzerland
- Lucerne Walking Tour & Xmas Market
- Strasbourg City Tour & Xmas Market
- Speyer Walking Tour & Xmas Market
- Koblenz Walking Tour & Xmas Market
- Cologne Walking Tour & Xmas Market
- Cochem Walking Tour with Xmas Market, Reichsburg Castle & Wine Tasting
- Rudesheim Visit
- Strasbourg Afternoon at Leisure
- Cologne Afternoon at Leisure

The Ship - MS Amadeus Cara

The innovative and custom designed 162 passenger Amadeus Cara, launched in 2022, offers all the amenities of a floating 5-star hotel. This Premium cruise ship features the most modern furnishings that blend masterfully with the architecture of the ship and a luxurious design that is the hallmark of the Amadeus fleet. The extensive Restaurant and the Panorama Bar offer divine views of the passing riverscapes, and the glass-shielded River Terrace & the Sun Deck allow you to relax in the open air. The attentive English-speaking onboard service staff will see to your comfort with typical European hospitality. The cabin design plans are forward-thinking, bright & modern, all part of a premium focus with 71 large Staterooms & 10 Suites. The beauty of river cruising is that the most interesting destinations come to you. This Cara charter features English-only onboard commentary with inclusive shore excursions balanced with choice to simply relax onboard, get a spa treatment or add sightseeing with optional excursions.

All Meals Included Onboard

Three meals daily are served graciously in the exquisite restaurant and feature local & international specialties. All dinners are four courses and are served with included hand selected wines, beer & soft drinks. While dining, you have splendid views of the passing scenic landscapes through the large picture windows. Enjoy afternoon and/or late evening snacks in the lounge based on the daily schedule.

Comfortable & Innovative Staterooms

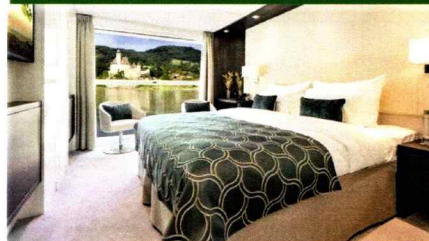
After boarding, unpack once. All staterooms are larger than traditional river cruise cabins & offer excellent river views. The Mozart Deck features 12 Suites with Walk Out Balconies. The other 18 Staterooms on the Mozart Deck & 33 Staterooms on the Strauss Deck feature an innovative Drop-Down Panoramic Window. The 18 Staterooms on the Haydn Deck have a fixed window. All staterooms are fully equipped with comfortable & modern furnishings including flat screen TV & large private bathrooms with shower.

Cruise Rates

Cat E - Haydn Deck	\$4995 pp dbl*	\$4795 pp dbl with BD**	+\$1200 single
Cat D - Haydn Deck	\$5295 pp dbl*	\$5095 pp dbl with BD**	+\$1200 single
Cat C - Strauss Deck	\$5695 pp dbl*	\$5495 pp dbl with BD**	+\$1600 single
Cat B - Strauss Deck	\$5895 pp dbl*	\$5695 pp dbl with BD**	+\$1600 single
Cat A - Mozart Deck	\$6095 pp dbl*	\$5895 pp dbl with BD**	+\$2000 single
Suite - Mozart Deck	\$6595 pp dbl*	\$6395 pp dbl with BD**	+\$2500 single

*Regular Rate or **Save \$200 per person/\$400 per couple with Booking Discount Rates (BD)

Staterooms

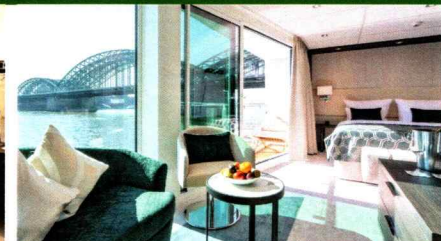


Staterooms - 172 or 188 sq. ft.

All staterooms feature 2 twin beds that can be separated or put together, flat screen TV, private bath with shower, hair dryer, closet, phone, desk, chair & safe. Mozart & Strauss Staterooms feature Drop Down Panoramic Window with 188 sq. ft. of floor space. Haydn Deck Staterooms feature a fixed window with 172 sq. ft.

(Stateroom size & amenities can vary)

Suites



Suite - 284 sq. ft. with Balcony

All suites are on the Mozart Deck and have panoramic windows with exterior Walk Out Balcony, two twin beds that can be separated or put together, a private sitting area, flat screen TV, mini-bar, private bath with shower, hair dryer, phone, closet, desk, chair, safe & offer 284 square feet of floor space.

(Suite size and amenities can vary)

SHIP TECHNICAL DATA

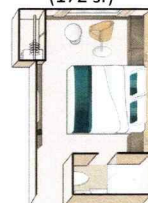
Launched:	2022	Max passengers:	162
Decks/Crew:	4/46	Cabins/Suites:	71/10

ACTIVITY LEVEL

Easy **1** **2** **3** **4** Active

Notes - Excursions require moderate walking with some stair climbing possible.
-Hotel/Ship Check in time in Europe typically begins between 3-4 pm.

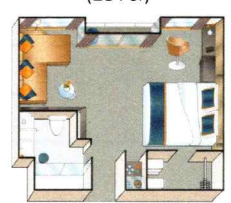
Stateroom Haydn Deck (172 sf)



Stateroom Strauss & Mozart Decks (188 sf)



Suite Mozart Deck (284 sf)



Reservation Form (River Cruise)

Switzerland & Christmas Markets of the Rhine

December 3, 2025

Booking #190860 (Web Code)

Contact Information/Mail Reservation Form to:

Ruth's Adventures • Attn: Ruth Conley

104 Kensington Court

Charlotte, MI 48813

517.543.1166 • rconley0923@sbcglobal.net

www.ruthsadventures.com

Cabin Category Requested: (All Cabin Categories are on a space available basis)Cat E: Cat D: Cat C: Cat B: Cat A: Suite:

Enclosed please find a deposit in the amount of \$ _____ (\$600 per person) to secure reservations for _____ # of people.

Premier's Travel Protection Plan (TPP): Yes, I (we) wish to purchase travel protection (TPP) (TPP must be purchased with initial deposit) No, I (we) decline travel protection (TPP)

Enclosed please find payment in the amount of \$ _____ (\$499 per person) to secure the Premier's Travel Protection Plan (TPP).

TOTAL PAYMENT \$ _____ Make checks payable to: RUTH'S ADVENTURES

GATEWAY AIRPORT _____ ROOMMATE'S GATEWAY AIRPORT _____

see flyer for included group gateway airport/departure city, additional charges apply for other airport packages

To avoid change fees, submit Passport names (first/mid/last) exactly as they appear on Passports

Passport Name: _____DOB (MM/DD/YY) _____ Gender M F

Passport #: _____ Exp Date (MM/DD/YY) _____

Country of Issuance _____

Roommate's Passport Name: _____DOB (MM/DD/YY) _____ Gender M F

Roommate's Passport #: _____ Exp Date (MM/DD/YY) _____

Country of Issuance _____

Street Address _____ Check if Roommate's address is the same

City _____ State _____ ZIP _____

Email address _____

MobilePhone# _____

Emergency Contact/Tel# _____

Notes or TSA/KTN #: _____



Cardholder Name (If paying by credit card) _____

Credit Card # _____ Exp Date: _____

CVV# _____ Amount to be charged \$ _____

Credit Card Billing Address: Check if address is the same as above

Address _____ City _____

State _____ ZIP _____ Tel# _____

Sign _____ Date _____

SIGNATURE REQUIRED (for credit card use & acceptance of terms*)

*I (We) agree to pay according to the credit card issuer agreement. I understand and accept the

DEPOSIT & FINAL PAYMENT

An Initial Deposit of \$600 per person is due with Reservation Form to secure reservations. Final Payment Due Date is 90 days prior to departure.

***BOOKING DISCOUNT**

Make your Final Payment by check prior to the Final Payment Due Date & receive \$400 per couple/\$200 per person Booking Discount!

• Initial Deposit can be made by check or credit card to be eligible.

• Payments after Initial Deposit are part of Final Payment & must be made by check.

ONLINE BOOKING OPTIONSave time, postage & secure your seat for this group departure. Simply type: <https://res.premierworlddiscovery.com> into your web browser & use the Booking Number (Web Code) from this flyer to make your Deposit online in just a few minutes. No need to submit a Reservation Form if booking online.**PREMIER'S TRAVEL PROTECTION PLAN (TPP) \$499 per person**

(must purchase with Initial Deposit)

Part A – Cancellation Waiver provided by PWD**I. Trip Cancellation Waiver (TCW)** - Guarantees full refund on all payments, except the Trip Cancellation Waiver Fee itself in case of cancellation up to the time and date of departure due to the passenger's personal illness or death of an immediate family member. Medical/official documentation required.**II. Premier "Any Reason" Cancellation Waiver (ARCW)** - Reimburses 75% of the cancellation fees in the form of a future travel credit certificate (FTCC) valid for 1 year, if you cancel more than 48 hours prior to scheduled departure for any reason not eligible for cash refund under the TCW (Part A – I). FTCC is non-transferable, may not be redeemed for cash and does not include any credit for the Trip Cancellation Waiver Fee. **The Trip Cancellation Waiver Fee must be paid for with Initial Deposit and is refundable until 180 days prior to departure. The Trip Cancellation Waiver does not cover any single supplement charges due to an individual's traveling companion canceling prior to departure.** The Trip Cancellation Waiver is non-transferable and valid for each applicant only. The Trip Cancellation Waiver does not cover any services such as airline tickets not purchased through PWD. Cancellations, Refunds & Inquiries under Part A will be handled by PWD. Certain Exclusions and Restrictions apply.**Part B – Post Departure Travel Protection Plan* provided by USI**

Includes coverage for: Trip Interruption (\$1,000); Trip Delay (\$100/Day-Max \$500); Baggage & Personal Effects (\$2,000); Baggage Delay (\$500); Emergency Accident/Sickness Medical Expense- excess coverage (\$30,000); Emergency Evacuation/Repatriation (\$150,000); Accidental Death & Dismemberment (\$25,000); Non-Insurance and Emergency Travel Assistance Services** (24/7). Claims & Inquiries under Part B will be administered by USI.

For full Part A and Part B plan details visit: premierworlddiscovery.com/TPP

All Benefits described on this page are for general information basis only. There are certain restrictions, exclusions and limitation that apply to all insurance coverages. Plan benefits, limits and provisions may vary by state jurisdiction.

CANCELLATION FEES

Cancellations are subject to the following per person fees;

- Cancel 180 days prior to departure: \$200 pp is retained
- Cancel 179-90 days prior to departure: Deposit or TPP** is retained
- Cancel 89-60 days prior to departure: 50% of total price
- Cancel 59-30 days prior to departure: 75% of total price
- Cancel 29 days or less prior to departure/no shows: No refunds

**If TPP purchased

RESPONSIBILITY

Premier World Tours LLC dba Premier World Discovery (hereafter PWD), whose vouchers are used by respective agents for the passenger in all matters pertaining to hotel accommodations, sightseeing tours and transportation, hold themselves free of responsibility for any damages occasioned from any cause whatsoever. PWD will not be responsible for any damages or inconvenience caused by late arrivals, departures and change of schedule or other conditions nor will they be responsible for any act, omission, or event during the time the passenger is not on board their conveyance. The passage contract in use by the airline concerned, when issued, shall constitute the sole contract between the airline and the purchaser of this tour/cruise, and/or passenger. PWD does not hold any responsibility for the conduct of any of its members, hotel, motorcoach, cruiseline, train, airline or other personnel. PWD reserves the right to decline to accept or retain any person as a member of a tour/cruise at its discretion. PWD &/or its Tour Director retain the right to require any participant to withdraw from a tour/cruise at any time, if determined to be in the best interests of health, safety & general welfare of the tour/cruise group or of the individual participant. Arbitration - I/We agree, any and all disputes concerning this contract or any other material concerning the trip, or the trip itself must be resolved exclusively pursuant to binding arbitration in the state of California, pursuant to the then current rules of the American Arbitration Association. Payment of the deposit for this tour/cruise constitutes acceptance of these terms and conditions. CST #2048841-40

IMPORTANT CONDITIONS/NOTES

- A valid US passport is required for this tour and is the responsibility of each passenger. Passports should be valid for up to six (6) months beyond the travel dates. All names must be submitted to Premier exactly as they appear on passenger passports.
- Itinerary and hotels are subject to change.

AIR NOTE

Air Schedules may not be available until Final Trip Documentation is received. Air seats are assigned by the airline and sometimes not assigned until the day of travel. Air seat changes can only be attempted upon receipt of e-tickets and Final Trip Documentation at which time availability may be limited. If specific seat assignments or airline choice is extremely important to your reservation, we recommend you book land only and make your own air reservations. Please make this adjustment to land only/own air at time of tour reservation.

